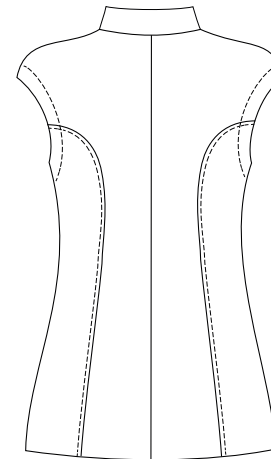
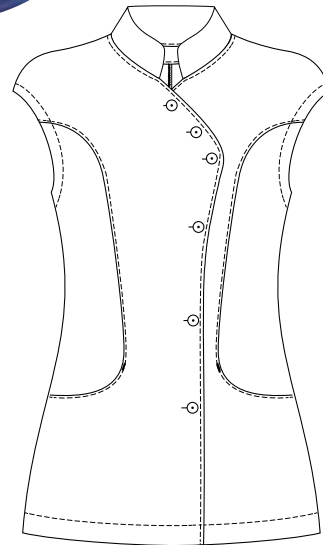




Bluse DAFNE stretch

DRESS
manufaktur








Kontakt: Hana Martincova
Telefon: 089 - 462 214 55
info@dress-manufaktur.com
www.dress-manufaktur.com



- asymmetrisch geknöpfter Verschluss
- Stehkragen 4,5 cm breit
- Wiener-Nähte am Vorder- und Rückteil
- Abgerundete Nahttasche am Vorderteil
- mit überschnittenen Schultern

- Stoff: 63% Cotton, 34% Polyester, 3% Stretch - Tootal
- 130 Gramm

- Haushaltswäsche 60 deg
- Größe 34-46

- | | | | |
|---|-------------------|---|--------------------|
|  | weiß 20001.1 |  | dunkelblau 95449.4 |
|  | hell blau 95093.3 |  | schwarz 99017.4 |
|  | hell grau 98449.2 |  | rot 93170.4 |
|  | anthrazit 98411.4 | | |