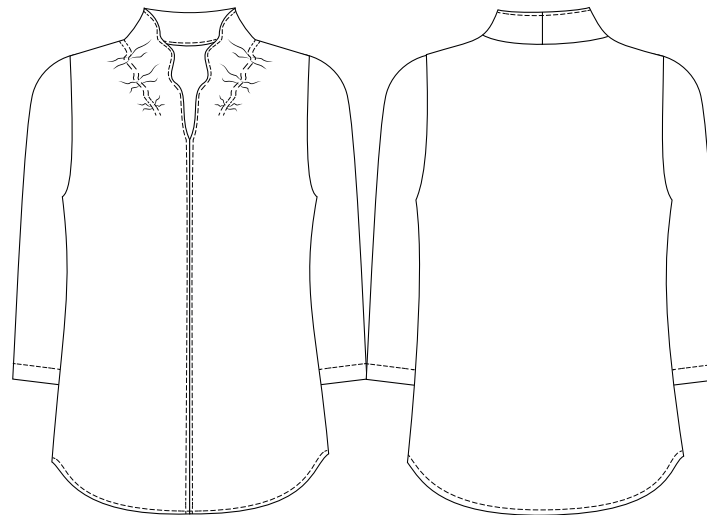









Bluse DENISE Stretch

DRESS  
manufaktur

**Kontakt:** Hana Martincova  
Telefon: 089 - 462 214 55  
info@dress-manufaktur.com  
www.dress-manufaktur.com



- gerade geschnittene Bluse
- Naht in der vorderen Mitte
- Kragen mit Rüsche
- 3/4 Ärmel
- hochwertige Verarbeitung mit verdeckten Nähten
  
- Stoff: 63% Cotton, 34% Polyester, 3% Stretch - Tootal
- 130 Gramm
  
- Haushaltswäsche 60 deg
- Größe 34-46

- |   |                   |   |                    |
|---|-------------------|---|--------------------|
|  | weiß 20001.1      |  | dunkelblau 95449.4 |
|  | hell blau 95093.3 |  | schwarz 99017.4    |
|  | hell grau 98449.2 |  | rot 93170.4        |
|  | anthrazit 98411.4 |   |                    |